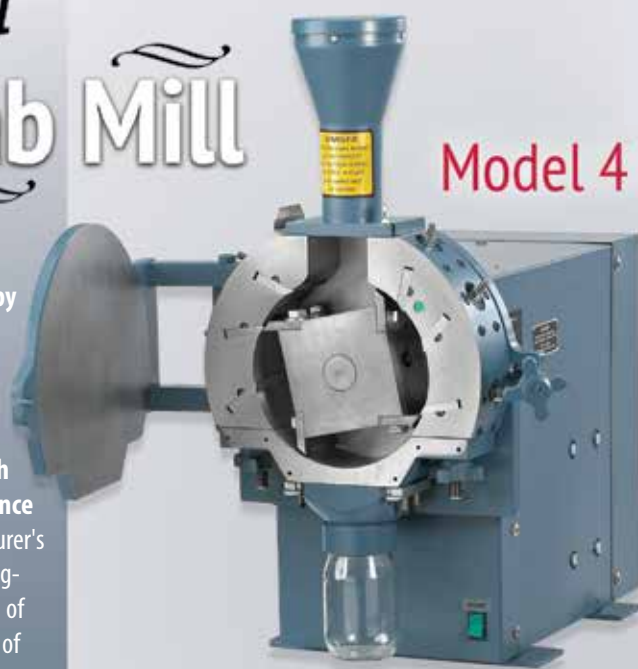


# The Original Lab Mill

agapi  
LAB SOLUTIONS

## Model 4 Wiley® Mill



The Wiley Mill is built by hand and consists of an all steel construction, with four rotating steel cutting knives, easy cleaning, no service tech required for maintenance and a one year manufacturer's warranty. The mills are suggested by the U.S. Bureau of Plant Industry for milling of samples.

Thomas Scientific sets the standard of quality, efficiency, and value within the sample preparation market. With over 75 years of proven technology, Wiley Mills are the most robust, longest lasting mills on the market!

Whatever your application, Thomas has a Mill for you!

- Bio-fuel
- Agriculture
- Tobacco
- Meat & Poultry
- Biology
- Life Science
- Pet Food

### Models for Bench Mounting

- Overall dimensions: 15" W x 24" D x 28" H (381 x 610 x 711 mm)
- Shipping weight: 375 lbs. (170 kg)
- Net weight: 301 lbs. (136.5 kg)

### Models with Floor Stand

- Overall dimensions: 20" W x 26" D x 49" H
- Shelf dimensions: 13.8" W x 15.9" D x 1.8" H
- Floor stand (3375E81) dimensions: 20" W x 25" D x 23" H

Thomas No.	Description
3375E15	Wiley® Mill, Model 4 Bench, 1 Hp, 115V, 50/60 Hz
3375E25	Wiley® Mill, Model 4 Bench, 1 Hp, 230V, 50/60 Hz
3375E55	Wiley® Mill, Model 4 Floor, 1 Hp, 230V, 50/60 Hz

For more information about **Thomas Wiley Mills** contact your **Thomas Scientific Sales Representative** today!

Want a FREE Sample Grinding? Visit [www.thomassci.com/wileymill](http://www.thomassci.com/wileymill)

— We carry all the top brands —



agapi  
LAB SOLUTIONS

[www.agapilabsolutions.com](http://www.agapilabsolutions.com)

Contact Us:  
Phone 1 (267) 397-3345  
E-mail [customerservice@agapilabsolutions.com](mailto:customerservice@agapilabsolutions.com)

Thomas Scientific, LLC Family of Companies



agapi  
LAB SOLUTIONS

We Believe You Are Important  
— How Can We Help?

Spring/Summer 2018

# Equipment & Instrumentation Source Guide

Featuring Promotions and Product Solutions





## Welcome!

Thomas Scientific is a distributor of laboratory supplies, equipment and chemicals. The products in this catalog represent only a small offering from our extensive catalog and website. We're here to make your purchasing process as simple as possible. For additional models, sizes, packaging, and accessories not shown in our catalogs or if you just need help selecting a product, contact us at 800-345-2100 or visit us on the web at [www.thomassci.com](http://www.thomassci.com).



Thomas Scientific accepts VISA, Master Card, American Express and the IMPAC card for government buyers.

**BINDER**  
Best conditions for your success

**BUCHI**

**ELMI**

**porvair**  
sciences

**FLIR**

**huber**  
high precision thermoregulation

**IKA**

**LABCONCO**

**labForce**  
powered by Thomas Scientific

**METTLER TOLEDO**

**NORLAKE**

**PRO Scientific**

**thermo scientific**

**WELCH**  
by Gardner Denver

**YSI**  
a xylem brand

## Our Mission

To help science create a better world by providing quality products with personal, timely and efficient service

*Delivering Quality Scientific Supplies Worldwide Since 1900*

Special offers and pricing are valid through July 30, 2018, unless otherwise noted.

**NOTE:** Offers in this catalog are void where prohibited by law or company policy. Shipping charges are not included. Prices and offers are subject to change without notice and are not to be combined with other offers/discounts or contract pricing. Valid in USA only. Dealer/reseller sales not applicable. For web orders, enter the promo code in the yellow box on the back of this catalog. For phone orders, please supply the promo code to the customer service representative when ordering. Discount pricing shown must be specified when placing order. Returned products will be subject to billing for Free Items at list price. Free items in 'Buy/Get 1 Free' offers will be the item of lowest value unless otherwise noted. Giveaways and free products may be shipped separately. Allow 4-6 weeks for delivery.

For additional deals from more suppliers, check out our Lab Basics brochure!

Download your copy today at [www.thomassci.com/deals](http://www.thomassci.com/deals)

**LAB BASICS**

Looking for additional deals?

Check out our

**Deal Central**

section on the web

[www.thomassci.com/deals](http://www.thomassci.com/deals)

## Product Solution

**labForce**  
powered by Thomas Scientific

### NEW BENCHTOP EQUIPMENT



#### Variable Speed Mini Orbitron™ Nutating Mixer

Provides gentle continuous mixing of specimens in a variety of blood tubes, centrifuge tubes, glass vials or plates.

Thomas No. 1165U03



#### Orbital Shaker

Optimal for mixing bottles, flasks and beakers due to the smooth horizontal motion.

Thomas Nos. 1165U07; 1165U08



#### Tube Rotator with Carousel

labForce's Laboratory Tube Rotator is ideal for Biochemistry, Molecular Biology and Clinical applications. Provides gentle or vigorous mixing. Supplied with a carousel for 14 x 50mL tubes.

Thomas No. 1165U04



#### Microplate Shaker

Reliable, regulated shaking for two microplates.

Thomas No. 1165U09



#### Mini Tube Rotator

Small footprint for your bench – we know you need all the space you can get! Ideal for Molecular Biology, Histochemistry and Clinical applications.

Thomas No. 1165U05



#### Tap Dancer Mini Tube Vortex Mixer

Compact, with low profile and small footprint. Pressure sensitive cup and continuous or touch operation.

Thomas No. 1165U06



#### Orbitron V 3D Orbital Shakers

Variable speed, 3D motion provides gentle or vigorous mixing.

Thomas No. 1165U11

For more information on NEW Benchtop Equipment from labForce, please visit [thomassci.com](http://thomassci.com)



thermo scientific

# Star™ T910 pH Titrators

Potentiometric titrator for accurate pH titrations with easily reportable results



The Thermo Scientific™ Orion™ T910 pH titrators are designed to increase your laboratory productivity by automating titrations. Our core electrochemistry technology is integrated with a state-of-the-art reagent dispensing system to create modern, simplified automated titrators designed to make performing titrations easier, more reliable and more reproducible than manual titrations.

Titration techniques include equivalence point titrations and preset pH endpoint titrations for versatile sample analysis. The automated titrant delivery system with high-accuracy burette and dispenser provides consistent results. Automatic results calculations simplifies analysis and reduces computational errors.



Use the Orion Star T910 pH titrator for dedicated acid-base titrations including:

- Titratable acidity of juices and wines
- Acidity of food products
- Alkalinity of waters
- Acidity and alkalinity of consumer products
- Total acid number (TAN)
- Total base number (TBN)

Thomas No.	Description
1160V89	Orion Star T910 pH Titrator (without electrode), 100-240V, 50/60Hz
1160V90	Orion Star T910 pH Titrator Standard ROSS Kit, 100-240V, 50/60Hz
1160V91	Orion Star T910 pH Titrator ROSS Sure-Flow Kit, 100-240V, 50/60Hz

Visit [thomassci.com](http://thomassci.com)  
Search 1160V89

PROTECTING PEOPLE SINCE 1925



## When it counts, count on us.

There's a glassware washer for every need with Labconco **FlaskScrubber®**, **SteamScrubber®** and **ScrubAir™**. Combining energy savings with exclusive features, we can solve your glassware problems. Available for narrow-neck glassware, wide-mouth glassware and pipettes.

Find out more at [thomassci.com](http://thomassci.com) Search: Labconco Glassware Washers

**LABCONCO**







# WHAT DO YOU NEED TO MEASURE?

FLIR delivers *world-class* thermal cameras and test & measurement tools with the accuracy, reliability, and versatility you need to tackle your most challenging jobs.



## Laboratory Homogenizers

- Handheld Homogenizers
- Digital Homogenizers
- Benchtop Homogenizers
- Multi-Sample Homogenizers
- Homogenizer Package Kits

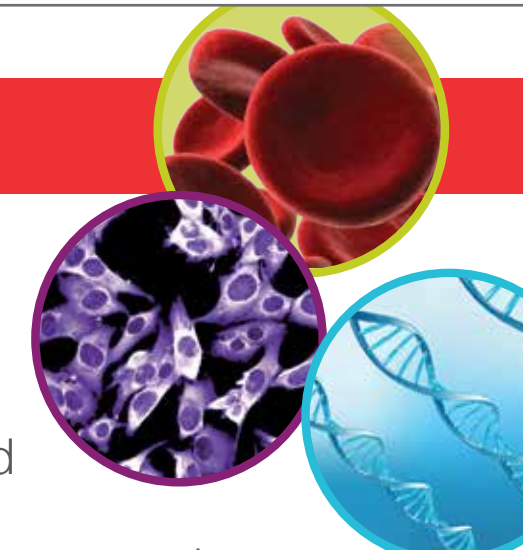
For more info; visit [thomassci.com](http://thomassci.com)

Search: PROScientific

thermoscientific

## Take advantage of these special offers!

Benchtop centrifuge packages designed around your applications. Order your centrifuge, rotor and accessories with 1 part number.



**3-YEAR CENTRIFUGE WARRANTY<sup>1</sup>**

included with select packages!

Thermo Scientific™ Heraeus benchtop centrifuges

**Fits in.**

- To your space, with compact designs
- To your processes and protocols, with complete application-focused packages
- To your future, with a 3-year centrifuge warranty<sup>1</sup> on select packages

**Stands out.**

Featuring innovative Thermo Scientific™ technologies:

- Secure, push-button rotor exchange in as little as 3 seconds with Auto-Lock™ rotor exchange
- Outstanding ergonomics and performance with Fiberlite™ carbon fiber rotors
- One-handed, certified<sup>2</sup> sample protection by ClickSeal™ biocontainment lids
- Plus, powerful performance with swing-out capacities up to 4 L and fixed angle rotor speeds over 30,000 x g

<sup>1</sup> Restrictions apply. Please see [thermoscientific.com/heraeusspinitwarranty](http://thermoscientific.com/heraeusspinitwarranty) for complete warranty offer and coverage details.

<sup>2</sup> Biocontainment certification by Public Health England, Porton Down, UK.

**Act now!**

Find out more at [thomassci.com](http://thomassci.com) Keywords: Heraeus Benchtop Packages



For Research Use Only. Not for use in diagnostic procedures. © 2018 Thermo Fisher Scientific Inc. All rights reserved. All trademarks are the property of Thermo Fisher Scientific and its subsidiaries unless otherwise specified. THOMASE&IAD 0218





### MiniVap®

Designed for low usage research and development departments where low numbers of individual plates or vials need drying.

- Easy to install and operate
- Faster dry down times than standard methods such as vacuum ovens
- Designed for any ANSI/SLAS 96-well plate
- Easy adjustments of temperature, gas flow rates and needle depth into the wells
- Compact footprint – fits all standard fume cupboards

Thomas No.	Description	Case
1169J98	Blowdown Evaporator MiniVap® (110/230 Volts), with 96 spiral needles	1
1169J99	Blowdown Evaporator MiniVap® (110/230 Volts), with 96 straight needles	1
1169K00	Blowdown Evaporator MiniVap® (110/230 Volts), with 24 straight needles	1
1169K01	Blowdown Evaporator MiniVap® (110/230 Volts), without a head	1

#### The Porvair Sciences line of storage/collection plates are designed for use in:

- Cell and Molecular Biology
- Drug Discovery
- Combinatorial Chemistry
- Sample Preparation
- Screening
- Genomics

#### Porvair Sciences plates are:

- Manufactured from pre-tested polypropylene for low extractables in clean room conditions
- DNase/RNase free
- Alphanumeric grid-referencing
- Easy to use with automated sample handling systems
- Easily sealed with matching cap mat or heat seal
- Packed in sealed sleeves of 5 plates
- Can be used for storing samples at -80°C

For more product information, please visit [thomassci.com](http://thomassci.com) Keyword Porvair



### Mat Capper

The Porvair Sciences Mat Capper is an affordable solution for laboratories having to seal a medium number of microplates. Compact and portable, the Mat Capper is easy to use requiring only one operation of the system to produce an accurate and tight seal.

- Caps shallow and deep well polypropylene plates
- Requires minimal pressure for capping, reducing fatigue and RSIs
- Powder coated to resist chemical spillage
- Can be secured to bench
- Works with glass tube rack

Thomas No.	Description	Case
1169K26	Mat Capper	1



### MiniSeal II Semi-Automatic Heat Sealer

The MiniSeal II seals most types of plates with a good seal.

- Powerful stepper motor control
- 450 watts of heating power
- Easy to set up
- Most polypropylene plates seals in less than 3 seconds
- Ideal for small bench space

Thomas No.	Description	Case
1169K27	MiniSeal II Semi-Automatic single plate heat sealer, 110V/220V. Supplied complete with two plate adaptor blocks, plate weight and line cord	1

### Ultra Clean Polypropylene Storage/Collection 96-Well Plates

Thomas No.	Description	Well Volume	Case
<b>96-Well Deep Square, 44 mm height</b>			
1169J88	Polypropylene, Pyramid Bottom	350uL	50
1169J87	Polypropylene, Pyramid Bottom	1.0mL	50
1169J89	Polypropylene, Pyramid Bottom	2.0mL	50
<b>96-Well Genomics Plate, 45 mm height</b>			
1169J90	Polypropylene, Pyramid Bottom, Toughened for Genomics	2.0mL	50
<b>96-Well Deep Round, 42 mm height</b>			
1169J95	Polypropylene, Round Bottom, Raised Rim	1.0mL	50
1169J96	Polypropylene, Round Bottom, No Rim	1.0mL	50
<b>96-Well Deep Round, Common Wall, 45 mm height</b>			
1169J94	Polypropylene, Round Well, Rimless	2.0mL	50
Thomas No.	Description	Use with Plate #	Case
<b>Cap Mats</b>			
1169J93	EVA Sealing Cap, Square Well	1169J88, 1169J87, 1169J89	50
1169J92	Friction Sealing Cap Mat, PP, Square Well	1169J90, 1169J91	50
1169K37	EVA Sealing Cap, Round Well	1169J95	50
1206H76	96-Well Pattern Adhesive Free Sealing	—	100



## Minichiller®

small, robust and cost effective

The compact Minichillers with OLÉ controllers convince as a cost-effective and environmentally friendly cooling solution for numerous laboratory applications. Due to the low purchase price, the investment pays for itself after a short time.

For more information, please visit [www.thomassci.com](http://www.thomassci.com)



Inspired by temperature



designed for scientists

### C-MAG HS 7 control

/// Available through Thomas Scientific

The IKA C-Mag HS 7 control has a square top made of ceramic. It stirs volumes of up to 20l (H<sub>2</sub>O) and runs at speeds ranging from 50-1500rpm.

- › Control of kinetics and sensitive reactions are supported by the integrated timer and counter function
- › IKA SmartTemp® function protects user intelligently
- › PT1000 temperature sensor included



For more information about IKA C-MAG HS 7 control please visit [thomassci.com](http://thomassci.com) Search: 1158Q52





MultiLab Line  
Lab Accurate

**ELMI** PREMIUM LABORATORY EQUIPMENT

- Benchtop Centrifuges
- Digital Thermo Microplate Shakers
- Fugamix Certifuge Mixers
- Water Bath Thermostats
- Intelli Mixers
- Magnetic Stirrer
- Microcentrifuges
- Sky Line Shakers
- Vortex



Made in Europe | All products available through Thomas Scientific



**WELCH**  
by Gardner Denver

CRVpro  
Direct Drive  
Rotary Vane  
Vacuum Pumps

The Welch CRVpro family of direct drive rotary vane pumps is the industry leader within the direct drive vacuum pump category. Service intervals are extended from three core features:

**Cool running.** By running cooler relative to competitive direct drive pumps, aggressive and corrosive chemical activity is reduced.

**Large Oil Capacity.** By having a larger oil reservoir relative to competitive direct drive pumps, aggressive and corrosive chemicals are diluted. This reduces their chemical activity.

**Internal surface protection.** Oil sump is PTFE coated, pump module has a black oxide coated.

The Welch CRVpro family of direct drive pumps includes all the features you'd expect:

- Low noise level
- Forced oil lubrication
- Anti-suck back valve
- Gas ballast
- cUL and CE Certification
- CRVpro4, CRVpro6, and CRVpro8 have dual voltage (switch selectable) motors

Thomas No.	Description	Price Each
1169A89	CRVpro4 Direct Drive Rotary Vane Vacuum Pump, 4m3/hr, 78L/min, 115V, 60Hz (US plug)	2,482.14
1169A90	CRVpro4 Direct Drive Rotary Vane Vacuum Pump, 4m3/hr, 67L/min, 230V, 40Hz (UK & Schuko plugs)	2,482.14
1169A91	CRVpro6 Direct Drive Rotary Vane Vacuum Pump, 6m3/hr, 118L/min, 115V, 60Hz (US plug)	2,735.33

Thomas No.	Description	Price Each
1169A92	CRVpro6 Direct Drive Rotary Vane Vacuum Pump, 6m3/hr, 100L/min, 230V, 40Hz (UK & Schuko plugs)	2,735.33
1169A93	CRVpro8 Direct Drive Rotary Vane Vacuum Pump, 8m3/hr, 158L/min, 115V, 60Hz (US plug)	3,018.42
1169A94	CRVpro8 Direct Drive Rotary Vane Vacuum Pump, 8m3/hr, 133L/min, 230V, 40Hz (UK & Schuko plugs)	3,003.40





**Your Missing Piece of the Puzzle**  
**SevenCompact™ pH and Conductivity Meters**

The SevenCompact combines best-in-class measurement technology with intuitive menus and a large color touchscreen. It's so easy to use, it won't ever leave your lab workers puzzled.

Learn more about your lab's missing piece today by visiting [www.thomassci.com/mettlertoledo](http://www.thomassci.com/mettlertoledo).

**METTLER TOLEDO**



**BUCHI**

For 75 years BUCHI is a leading solution provider in laboratory technology for R & D, quality control and production worldwide. Our solutions for laboratory, industrial and parallel evaporation, melting point, and preparative chromatography meet the highest needs of our customers around the globe.

Learn more at [thomassci.com](http://thomassci.com)  
 Keyword: BUCHI



**labForce**  
 powered by Thomas Scientific

**NEW!**  
**BALANCES**

**TS-B Series**  
 Basic Portable Weighing  
 Economical weighing  
 Educational & general laboratory use

**TS-E Series**  
 Economy Weighing  
 Economy level balances / Basic weighing needs

**TS-L & TS-L.C Series**  
 Standard Weighing  
 Highly precise measurement

**TS-L.N Series**  
 Standard Weighing  
 with NTEP Certification

**TS-P Series**  
 Portable Weighing  
 Educational and light industrial use

**TS-T Series**  
 Advanced Technology  
 Advanced weighing performance  
 Maximum ease-of-operation

**TS-U Series**  
 Ultra-microbalances & microbalances  
 Professional level of weighing  
 Highest measurement accuracy

Please visit [thomassci.com](http://thomassci.com) Keywords: labForce Balances



**thermo scientific**

**Special introductory offers available!**

**NEW! GENESYS Vis/UV-Vis Spectrophotometers**  
 Designed for the modern user.  
 Built for the real world.

Introducing the next generation of Thermo Scientific™ GENESYS™ UV-Vis spectrophotometers.

Designed with an understanding of the challenges you face in your lab every day, the GENESYS spectrophotometers will make doing your job easier than ever before.

- Walk-up convenience – modern, simple-to-use touchscreen interface
- Sampling flexibility – easy access and accessories for all your application needs
- Wi-Fi USB Adaptor – adds wireless capabilities, save data and methods, print results from on-board control
- Built to last – for repetitive use and demanding environments

The new GENESYS line of spectrophotometers will exceed your expectations for usability and performance – and deliver the accurate, reproducible results you need.

**ThermoFisher SCIENTIFIC**

Offer expires June 30, 2018

Find out more at [thomassci.com](http://thomassci.com) Search: 1171Q02

© 2018 Thermo Fisher Scientific Inc. All rights reserved. All trademarks are the property of Thermo Fisher Scientific and its subsidiaries unless otherwise specified.





**Avantgarde.Line Series**  
**FD and ED Drying/Heating Chambers**  
**BD Incubators**

**FD Drying and Heating Chambers**  
**with Forced Convection**

- Temperature range: ambient temperature plus 10°C to 300°C
- High temperature accuracy thanks to APT.line™ technology
  - Controller with LCD display
  - Electromechanical control of the exhaust air flap
  - 2 chrome-plated racks
  - Units up to 115L are stackable
  - Class 2 independent temperature safety device (DIN 12880) with visual temperature alarm
  - Ergonomic handle design
  - USB port for recording data

**Thomas Nos. 1181L31; 1181L32;**  
**1184M72; 1181L33; 1182L89; 1181L34**

**BD Incubators**  
**with Gravity Convection**

- Temperature range: ambient temperature plus 5°C to 300°C
- High temperature accuracy thanks to APT.line™ technology
- Controller with LCD display
- Electromechanical control of the exhaust air flap
- Inner door made of tempered safety glass 2 chrome-plated racks
- Units up to 115L are stackable
- Class 3.1 independent temperature safety device (DIN 12880) with visual temperature alarm
- Ergonomic handle design
- USB port for recording data

**Thomas Nos. 1180Q95; 1180Q96; 1184M73;**  
**1180Q97; 1180Q98; 1180Q99**

**ED Drying and Heating Chambers**  
**with Gravity Convection**

- Temperature range: ambient temperature plus 5°C to 300°C
- High temperature accuracy thanks to APT.line™ technology
- Controller with LCD display
- Electromechanical control of the exhaust air flap
- 2 chrome-plated racks
- Units up to 115L are stackable
- Class 2 independent temperature safety device (DIN 12880) with visual temperature alarm
- Ergonomic handle design
- USB port for recording data

**Thomas Nos. 1184M74; 1180Q85; 1184M75;**  
**1180Q86; 1180Q87; 1180Q88**

For more information on **FD/ED Drying/Heating Chambers** and **BD Incubators**, please visit [thomassci.com](http://thomassci.com)



**Premier™ Glass and Solid Door**  
**Laboratory & Pharmacy**  
**Refrigerators**



Designed to meet the demanding requirements for scientific and laboratory research. Provides energy efficient, convenient, safe, and reliable performance for optimal storage temperature environments necessary for a wide range of life science, pharmacy, biological, medical, clinical, vaccine, and industrial applications.



**Product Features**

- Digital LED Display Microprocessor Temperature Controller
- Audible and Visual High and Low Temperature Alarm
- Adjustable Temperature Range 2°C – 10°C
- Remote Alarm Contacts
- Key Door Lock
- Casters

Thomas No.	Cu. Ft.	Doors	Shelves	W"	D"	H"	Voltage
1232P93	24	1	3	27 ½	35 ½	79 %	115V/60Hz
1232P94	24	1	3	27 ½	35 ½	79 %	230V/50Hz
1232P85	24	1	3	27 ½	35 ½	79 %	115V/60Hz
1232P86	24	1	3	27 ½	35 ½	79 %	230V/50Hz
1232P95	33.1	1	3	31 ¼	36 ½	87 %	115V/60Hz
1232P96	33.1	1	3	31 ¼	36 ½	87 %	230V/50Hz
1232P87	33.1	1	3	31 ¼	36 ½	87 %	115V/60Hz
1232P88	33.1	1	3	31 ¼	36 ½	87 %	230V/50Hz
1232P97	48.75	2	6	55	34	79 %	115V/60Hz
1232P98	48.75	2	6	55	34	79 %	230V/50Hz
1199G49	52	2	6	55	35 ½	79 %	115V/60Hz
1159D72	52	2	6	55	35 ½	79 %	230V/50Hz
1232P89	52	2	6	55	35 ½	79 %	115V/60Hz
1232P90	52	2	6	55	35 ½	79 %	230V/50Hz
1226A08	80	3	9	82 ½	35 ½	79 %	115V/60Hz
1232Q00	80	3	9	82 ½	35 ½	79 %	230V/50Hz
1226A07	80	3	9	82 ½	35 ½	79 %	115V/60Hz
1232P92	80	3	9	82 ½	35 ½	79 %	230V/50Hz

For more information, please visit: [www.thomassci.com](http://www.thomassci.com)





**Avantgarde.Line Series**  
**FD and ED Drying/Heating Chambers**  
**BD Incubators**

**FD Drying and Heating Chambers**  
**with Forced Convection**

- Temperature range: ambient temperature plus 10°C to 300°C
- High temperature accuracy thanks to APT.line™ technology
  - Controller with LCD display
  - Electromechanical control of the exhaust air flap
  - 2 chrome-plated racks
  - Units up to 115L are stackable
  - Class 2 independent temperature safety device (DIN 12880) with visual temperature alarm
  - Ergonomic handle design
  - USB port for recording data

**Thomas Nos. 1181L31; 1181L32;**  
**1184M72; 1181L33; 1182L89; 1181L34**

**BD Incubators**  
**with Gravity Convection**

- Temperature range: ambient temperature plus 5°C to 300°C
- High temperature accuracy thanks to APT.line™ technology
- Controller with LCD display
- Electromechanical control of the exhaust air flap
- Inner door made of tempered safety glass 2 chrome-plated racks
- Units up to 115L are stackable
- Class 3.1 independent temperature safety device (DIN 12880) with visual temperature alarm
- Ergonomic handle design
- USB port for recording data

**Thomas Nos. 1180Q95; 1180Q96; 1184M73;**  
**1180Q97; 1180Q98; 1180Q99**

**ED Drying and Heating Chambers**  
**with Gravity Convection**

- Temperature range: ambient temperature plus 5°C to 300°C
- High temperature accuracy thanks to APT.line™ technology
- Controller with LCD display
- Electromechanical control of the exhaust air flap
- 2 chrome-plated racks
- Units up to 115L are stackable
- Class 2 independent temperature safety device (DIN 12880) with visual temperature alarm
- Ergonomic handle design
- USB port for recording data

**Thomas Nos. 1184M74; 1180Q85; 1184M75;**  
**1180Q86; 1180Q87; 1180Q88**

For more information on **FD/ED Drying/Heating Chambers** and **BD Incubators**, please visit [thomassci.com](http://thomassci.com)



**Premier™ Glass and Solid Door**  
**Laboratory & Pharmacy**  
**Refrigerators**

Designed to meet the demanding requirements for scientific and laboratory research. Provides energy efficient, convenient, safe, and reliable performance for optimal storage temperature environments necessary for a wide range of life science, pharmacy, biological, medical, clinical, vaccine, and industrial applications.



Thomas No. 1232P89

Thomas No. 1232P93

Thomas No.	Cu. Ft.	Doors	Shelves	W"	D"	H"	Voltage	Thomas No.	Cu. Ft.	Doors	Shelves	W"	D"	H"	Voltage
1232P93	24	1	3	27 ½	35 ½	79 %	115V/60Hz	1232P98	48.75	2	6	55	34	79 %	230V/50Hz
1232P94	24	1	3	27 ½	35 ½	79 %	230V/50Hz	1199G49	52	2	6	55	35 ½	79 %	115V/60Hz
1232P85	24	1	3	27 ½	35 ½	79 %	115V/60Hz	1159D72	52	2	6	55	35 ½	79 %	230V/50Hz
1232P86	24	1	3	27 ½	35 ½	79 %	230V/50Hz	1232P89	52	2	6	55	35 ½	79 %	115V/60Hz
1232P95	33.1	1	3	31 ¼	36 ½	87 %	115V/60Hz	1232P90	52	2	6	55	35 ½	79 %	230V/50Hz
1232P96	33.1	1	3	31 ¼	36 ½	87 %	230V/50Hz	1226A08	80	3	9	82 ½	35 ½	79 %	115V/60Hz
1232P87	33.1	1	3	31 ¼	36 ½	87 %	115V/60Hz	1232Q00	80	3	9	82 ½	35 ½	79 %	230V/50Hz
1232P88	33.1	1	3	31 ¼	36 ½	87 %	230V/50Hz	1226A07	80	3	9	82 ½	35 ½	79 %	115V/60Hz
1232P97	48.75	2	6	55	34	79 %	115V/60Hz	1232P92	80	3	9	82 ½	35 ½	79 %	230V/50Hz

**Product Features**

- Digital LED Display Microprocessor Temperature Controller
- Audible and Visual High and Low Temperature Alarm
- Adjustable Temperature Range 2°C – 10°C
- Remote Alarm Contacts
- Key Door Lock
- Casters

For more information, please visit: [www.thomassci.com](http://www.thomassci.com)





**Your Missing Piece of the Puzzle**  
**SevenCompact™ pH and Conductivity Meters**

The SevenCompact combines best-in-class measurement technology with intuitive menus and a large color touchscreen. It's so easy to use, it won't ever leave your lab workers puzzled.

Learn more about your lab's missing piece today by visiting [www.thomassci.com/mettlertoledo](http://www.thomassci.com/mettlertoledo).

**METTLER TOLEDO**



**BUCHI**

For 75 years BUCHI is a leading solution provider in laboratory technology for R & D, quality control and production worldwide. Our solutions for laboratory, industrial and parallel evaporation, melting point, and preparative chromatography meet the highest needs of our customers around the globe.

Learn more at [thomassci.com](http://thomassci.com)  
 Keyword: BUCHI



**labForce**  
 powered by Thomas Scientific

**NEW!**  
**BALANCES**

**TS-B Series**  
 Basic Portable Weighing  
 Economical weighing  
 Educational & general laboratory use

**TS-E Series**  
 Economy Weighing  
 Economy level balances / Basic weighing needs

**TS-L & TS-L.C Series**  
 Standard Weighing  
 Highly precise measurement

**TS-L.N Series**  
 Standard Weighing  
 with NTEP Certification

**TS-P Series**  
 Portable Weighing  
 Educational and light industrial use

**TS-T Series**  
 Advanced Technology  
 Advanced weighing performance  
 Maximum ease-of-operation

**TS-U Series**  
 Ultra-microbalances & microbalances  
 Professional level of weighing  
 Highest measurement accuracy

Please visit [thomassci.com](http://thomassci.com) Keywords: labForce Balances



**thermo scientific**

**Special introductory offers available!**

**NEW! GENESYS Vis/UV-Vis Spectrophotometers**  
 Designed for the modern user.  
 Built for the real world.

Introducing the next generation of **Thermo Scientific™ GENESYS™ UV-Vis spectrophotometers.**

Designed with an understanding of the challenges you face in your lab every day, the GENESYS spectrophotometers will make doing your job easier than ever before.

- Walk-up convenience – modern, simple-to-use touchscreen interface
- Sampling flexibility – easy access and accessories for all your application needs
- Wi-Fi USB Adaptor – adds wireless capabilities, save data and methods, print results from on-board control
- Built to last – for repetitive use and demanding environments

The new GENESYS line of spectrophotometers will exceed your expectations for usability and performance – and deliver the accurate, reproducible results you need.

**ThermoFisher SCIENTIFIC**

Offer expires June 30, 2018

Find out more at [thomassci.com](http://thomassci.com) Search: 1171Q02

© 2018 Thermo Fisher Scientific Inc. All rights reserved. All trademarks are the property of Thermo Fisher Scientific and its subsidiaries unless otherwise specified.





MultiLab Line  
Lab Accurate

**ELMI** PREMIUM LABORATORY EQUIPMENT

- Benchtop Centrifuges
- Digital Thermo Microplate Shakers
- Fugamix Certifuge Mixers
- Water Bath Thermostats
- Intelli Mixers
- Magnetic Stirrer
- Microcentrifuges
- Sky Line Shakers
- Vortex



Made in Europe | All products available through Thomas Scientific



**WELCH**  
by Gardner Denver

CRVpro  
Direct Drive  
Rotary Vane  
Vacuum Pumps

The Welch CRVpro family of direct drive rotary vane pumps is the industry leader within the direct drive vacuum pump category. Service intervals are extended from three core features:

**Cool running.** By running cooler relative to competitive direct drive pumps, aggressive and corrosive chemical activity is reduced.

**Large Oil Capacity.** By having a larger oil reservoir relative to competitive direct drive pumps, aggressive and corrosive chemicals are diluted. This reduces their chemical activity.

**Internal surface protection.** Oil sump is PTFE coated, pump module has a black oxide coated.

The Welch CRVpro family of direct drive pumps includes all the features you'd expect:

- Low noise level
- Forced oil lubrication
- Anti-suck back valve
- Gas ballast
- cUL and CE Certification
- CRVpro4, CRVpro6, and CRVpro8 have dual voltage (switch selectable) motors

Thomas No.	Description	Price Each
1169A89	CRVpro4 Direct Drive Rotary Vane Vacuum Pump, 4m3/hr, 78L/min, 115V, 60Hz (US plug)	2,482.14
1169A90	CRVpro4 Direct Drive Rotary Vane Vacuum Pump, 4m3/hr, 67L/min, 230V, 40Hz (UK & Schuko plugs)	2,482.14
1169A91	CRVpro6 Direct Drive Rotary Vane Vacuum Pump, 6m3/hr, 118L/min, 115V, 60Hz (US plug)	2,735.33

Thomas No.	Description	Price Each
1169A92	CRVpro6 Direct Drive Rotary Vane Vacuum Pump, 6m3/hr, 100L/min, 230V, 40Hz (UK & Schuko plugs)	2,735.33
1169A93	CRVpro8 Direct Drive Rotary Vane Vacuum Pump, 8m3/hr, 158L/min, 115V, 60Hz (US plug)	3,018.42
1169A94	CRVpro8 Direct Drive Rotary Vane Vacuum Pump, 8m3/hr, 133L/min, 230V, 40Hz (UK & Schuko plugs)	3,003.40





### MiniVap®

Designed for low usage research and development departments where low numbers of individual plates or vials need drying.

- Easy to install and operate
- Faster dry down times than standard methods such as vacuum ovens
- Designed for any ANSI/SLAS 96-well plate
- Easy adjustments of temperature, gas flow rates and needle depth into the wells
- Compact footprint – fits all standard fume cupboards

Thomas No.	Description	Case
1169J98	Blowdown Evaporator MiniVap® (110/230 Volts), with 96 spiral needles	1
1169J99	Blowdown Evaporator MiniVap® (110/230 Volts), with 96 straight needles	1
1169K00	Blowdown Evaporator MiniVap® (110/230 Volts), with 24 straight needles	1
1169K01	Blowdown Evaporator MiniVap® (110/230 Volts), without a head	1

#### The Porvair Sciences line of storage/collection plates are designed for use in:

- Cell and Molecular Biology
- Drug Discovery
- Combinatorial Chemistry
- Sample Preparation
- Screening
- Genomics

#### Porvair Sciences plates are:

- Manufactured from pre-tested polypropylene for low extractables in clean room conditions
- DNase/RNase free
- Alphanumeric grid-referencing
- Easy to use with automated sample handling systems
- Easily sealed with matching cap mat or heat seal
- Packed in sealed sleeves of 5 plates
- Can be used for storing samples at -80°C

For more product information, please visit [thomassci.com](http://thomassci.com) Keyword Porvair



### Mat Capper

The Porvair Sciences Mat Capper is an affordable solution for laboratories having to seal a medium number of microplates. Compact and portable, the Mat Capper is easy to use requiring only one operation of the system to produce an accurate and tight seal.

- Caps shallow and deep well polypropylene plates
- Requires minimal pressure for capping, reducing fatigue and RSIs
- Powder coated to resist chemical spillage
- Can be secured to bench
- Works with glass tube rack

Thomas No.	Description	Case
1169K26	Mat Capper	1



### MiniSeal II Semi-Automatic Heat Sealer

The MiniSeal II seals most types of plates with a good seal.

- Powerful stepper motor control
- 450 watts of heating power
- Easy to set up
- Most polypropylene plates seals in less than 3 seconds
- Ideal for small bench space

Thomas No.	Description	Case
1169K27	MiniSeal II Semi-Automatic single plate heat sealer, 110V/220V. Supplied complete with two plate adaptor blocks, plate weight and line cord	1

### Ultra Clean Polypropylene Storage/Collection 96-Well Plates

Thomas No.	Description	Well Volume	Case
<b>96-Well Deep Square, 44 mm height</b>			
1169J88	Polypropylene, Pyramid Bottom	350uL	50
1169J87	Polypropylene, Pyramid Bottom	1.0mL	50
1169J89	Polypropylene, Pyramid Bottom	2.0mL	50
<b>96-Well Genomics Plate, 45 mm height</b>			
1169J90	Polypropylene, Pyramid Bottom, Toughened for Genomics	2.0mL	50
<b>96-Well Deep Round, 42 mm height</b>			
1169J95	Polypropylene, Round Bottom, Raised Rim	1.0mL	50
1169J96	Polypropylene, Round Bottom, No Rim	1.0mL	50
<b>96-Well Deep Round, Common Wall, 45 mm height</b>			
1169J94	Polypropylene, Round Well, Rimless	2.0mL	50
Thomas No.	Description	Use with Plate #	Case
<b>Cap Mats</b>			
1169J93	EVA Sealing Cap, Square Well	1169J88, 1169J87, 1169J89	50
1169J92	Friction Sealing Cap Mat, PP, Square Well	1169J90, 1169J91	50
1169K37	EVA Sealing Cap, Round Well	1169J95	50
1206H76	96-Well Pattern Adhesive Free Sealing	—	100



## Minichiller®

small, robust and cost effective

The compact Minichillers with OLÉ controllers convince as a cost-effective and environmentally friendly cooling solution for numerous laboratory applications. Due to the low purchase price, the investment pays for itself after a short time.

For more information, please visit [www.thomassci.com](http://www.thomassci.com)



Inspired by temperature



### C-MAG HS 7 control

/// Available through Thomas Scientific

The IKA C-Mag HS 7 control has a square top made of ceramic. It stirs volumes of up to 20l (H<sub>2</sub>O) and runs at speeds ranging from 50-1500rpm.

- › Control of kinetics and sensitive reactions are supported by the integrated timer and counter function
- › IKA SmartTemp® function protects user intelligently
- › PT1000 temperature sensor included



For more information about IKA C-MAG HS 7 control please visit [thomassci.com](http://thomassci.com) Search: 1158Q52





# WHAT DO YOU NEED TO MEASURE?

FLIR delivers *world-class* thermal cameras and test & measurement tools with the accuracy, reliability, and versatility you need to tackle your most challenging jobs.



## Laboratory Homogenizers

- Handheld Homogenizers
- Digital Homogenizers
- Benchtop Homogenizers
- Multi-Sample Homogenizers
- Homogenizer Package Kits

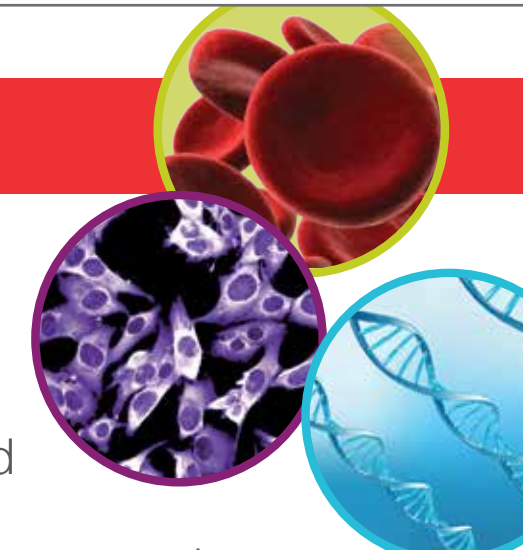
For more info; visit [thomassci.com](http://thomassci.com)

Search: PROScientific

thermoscientific

## Take advantage of these special offers!

Benchtop centrifuge packages designed around your applications. Order your centrifuge, rotor and accessories with 1 part number.



**3-YEAR CENTRIFUGE WARRANTY<sup>1</sup>**  
included with select packages!

Thermo Scientific™ Heraeus benchtop centrifuges

**Fits in.**

- To your space, with compact designs
- To your processes and protocols, with complete application-focused packages
- To your future, with a 3-year centrifuge warranty<sup>1</sup> on select packages

**Stands out.**

Featuring innovative Thermo Scientific™ technologies:

- Secure, push-button rotor exchange in as little as 3 seconds with Auto-Lock™ rotor exchange
- Outstanding ergonomics and performance with Fiberlite™ carbon fiber rotors
- One-handed, certified<sup>2</sup> sample protection by ClickSeal™ biocontainment lids
- Plus, powerful performance with swing-out capacities up to 4 L and fixed angle rotor speeds over 30,000 x g

<sup>1</sup> Restrictions apply. Please see [thermoscientific.com/heraeusspinitwarranty](http://thermoscientific.com/heraeusspinitwarranty) for complete warranty offer and coverage details.

<sup>2</sup> Biocontainment certification by Public Health England, Porton Down, UK.

**Act now!**

Find out more at [thomassci.com](http://thomassci.com) Keywords: Heraeus Benchtop Packages



For Research Use Only. Not for use in diagnostic procedures. © 2018 Thermo Fisher Scientific Inc. All rights reserved. All trademarks are the property of Thermo Fisher Scientific and its subsidiaries unless otherwise specified. THOMASE&IAD 0218



thermo scientific

# Star™ T910 pH Titrators

Potentiometric titrator for accurate pH titrations with easily reportable results



The Thermo Scientific™ Orion™ T910 pH titrators are designed to increase your laboratory productivity by automating titrations. Our core electrochemistry technology is integrated with a state-of-the-art reagent dispensing system to create modern, simplified automated titrators designed to make performing titrations easier, more reliable and more reproducible than manual titrations.

Titration techniques include equivalence point titrations and preset pH endpoint titrations for versatile sample analysis. The automated titrant delivery system with high-accuracy burette and dispenser provides consistent results. Automatic results calculations simplifies analysis and reduces computational errors.



Use the Orion Star T910 pH titrator for dedicated acid-base titrations including:

- Titratable acidity of juices and wines
- Acidity of food products
- Alkalinity of waters
- Acidity and alkalinity of consumer products
- Total acid number (TAN)
- Total base number (TBN)

Thomas No.	Description
1160V89	Orion Star T910 pH Titrator (without electrode), 100-240V, 50/60Hz
1160V90	Orion Star T910 pH Titrator Standard ROSS Kit, 100-240V, 50/60Hz
1160V91	Orion Star T910 pH Titrator ROSS Sure-Flow Kit, 100-240V, 50/60Hz

Visit [thomassci.com](http://thomassci.com)  
Search 1160V89

PROTECTING PEOPLE SINCE 1925



## When it counts, count on us.

There's a glassware washer for every need with Labconco **FlaskScrubber®**, **SteamScrubber®** and **ScrubAir™**. Combining energy savings with exclusive features, we can solve your glassware problems. Available for narrow-neck glassware, wide-mouth glassware and pipettes.

Find out more at [thomassci.com](http://thomassci.com) Search: Labconco Glassware Washers

**LABCONCO**





## Welcome!

Thomas Scientific is a distributor of laboratory supplies, equipment and chemicals. The products in this catalog represent only a small offering from our extensive catalog and website. We're here to make your purchasing process as simple as possible. For additional models, sizes, packaging, and accessories not shown in our catalogs or if you just need help selecting a product, contact us at 800-345-2100 or visit us on the web at [www.thomassci.com](http://www.thomassci.com).



Thomas Scientific accepts VISA, Master Card, American Express and the IMPAC card for government buyers.

**BINDER**  
Best conditions for your success

**BUCHI**

**ELMI**

**porvair**  
sciences

**FLIR**

**huber**  
high precision thermoregulation

**IKA**

**LABCONCO**

**labForce**  
powered by Thomas Scientific

**METTLER TOLEDO**

**NORLAKE**

**PRO Scientific**

**thermo scientific**

**WELCH**  
by Gardner Denver

**YSI**  
a xylem brand

## Our Mission

To help science create a better world by providing quality products with personal, timely and efficient service

*Delivering Quality Scientific Supplies Worldwide Since 1900*

Special offers and pricing are valid through July 30, 2018, unless otherwise noted.

**NOTE:** Offers in this catalog are void where prohibited by law or company policy. Shipping charges are not included. Prices and offers are subject to change without notice and are not to be combined with other offers/discounts or contract pricing. Valid in USA only. Dealer/reseller sales not applicable. For web orders, enter the promo code in the yellow box on the back of this catalog. For phone orders, please supply the promo code to the customer service representative when ordering. Discount pricing shown must be specified when placing order. Returned products will be subject to billing for Free Items at list price. Free items in 'Buy/Get 1 Free' offers will be the item of lowest value unless otherwise noted. Giveaways and free products may be shipped separately. Allow 4-6 weeks for delivery.

For additional deals from more suppliers, check out our Lab Basics brochure!

Download your copy today at [www.thomassci.com/deals](http://www.thomassci.com/deals)

**LAB BASICS**

Looking for additional deals?

Check out our

**Deal Central**

section on the web

[www.thomassci.com/deals](http://www.thomassci.com/deals)

## Product Solution

**labForce**  
powered by Thomas Scientific

### NEW BENCHTOP EQUIPMENT



#### Variable Speed Mini Orbitron™ Nutating Mixer

Provides gentle continuous mixing of specimens in a variety of blood tubes, centrifuge tubes, glass vials or plates.

Thomas No. 1165U03



#### Orbital Shaker

Optimal for mixing bottles, flasks and beakers due to the smooth horizontal motion.

Thomas Nos. 1165U07; 1165U08



#### Tube Rotator with Carousel

labForce's Laboratory Tube Rotator is ideal for Biochemistry, Molecular Biology and Clinical applications. Provides gentle or vigorous mixing. Supplied with a carousel for 14 x 50mL tubes.

Thomas No. 1165U04



#### Microplate Shaker

Reliable, regulated shaking for two microplates.

Thomas No. 1165U09



#### Mini Tube Rotator

Small footprint for your bench – we know you need all the space you can get! Ideal for Molecular Biology, Histochemistry and Clinical applications.

Thomas No. 1165U05



#### Tap Dancer Mini Tube Vortex Mixer

Compact, with low profile and small footprint. Pressure sensitive cup and continuous or touch operation.

Thomas No. 1165U06



#### Orbitron V 3D Orbital Shakers

Variable speed, 3D motion provides gentle or vigorous mixing.

Thomas No. 1165U11

For more information on NEW Benchtop Equipment from labForce, please visit [thomassci.com](http://thomassci.com)

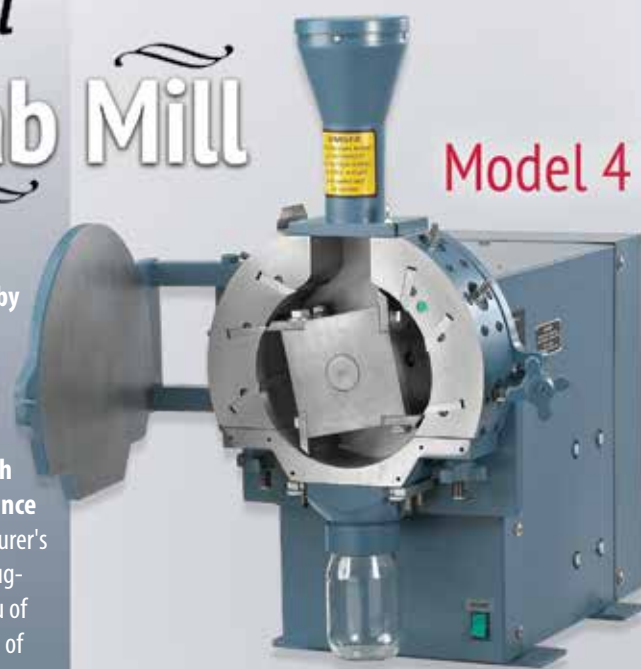


# The Original Lab Mill

agapi  
LAB SOLUTIONS

## Model 4 Wiley® Mill

The Wiley Mill is built by hand and consists of an all steel construction, with four rotating steel cutting knives, easy cleaning, no service tech required for maintenance and a one year manufacturer's warranty. The mills are suggested by the U.S. Bureau of Plant Industry for milling of samples.



Thomas Scientific sets the standard of quality, efficiency, and value within the sample preparation market. With over 75 years of proven technology, Wiley Mills are the most robust, longest lasting mills on the market!

Whatever your application, Thomas has a Mill for you!

- Bio-fuel
- Agriculture
- Tobacco
- Meat & Poultry
- Biology
- Life Science
- Pet Food

### Models for Bench Mounting

- Overall dimensions: 15" W x 24" D x 28" H (381 x 610 x 711 mm)
- Shipping weight: 375 lbs. (170 kg)
- Net weight: 301 lbs. (136.5 kg)

### Models with Floor Stand

- Overall dimensions: 20" W x 26" D x 49" H
- Shelf dimensions: 13.8" W x 15.9" D x 1.8" H
- Floor stand (3375E81) dimensions: 20" W x 25" D x 23" H

Thomas No.	Description
3375E15	Wiley® Mill, Model 4 Bench, 1 Hp, 115V, 50/60 Hz
3375E25	Wiley® Mill, Model 4 Bench, 1 Hp, 230V, 50/60 Hz
3375E55	Wiley® Mill, Model 4 Floor, 1 Hp, 230V, 50/60 Hz

For more information about **Thomas Wiley Mills** contact your **Thomas Scientific Sales Representative** today!

Want a FREE Sample Grinding? Visit [www.thomassci.com/wileymill](http://www.thomassci.com/wileymill)

— We carry all the top brands —



agapi  
LAB SOLUTIONS

[www.agapilabsolutions.com](http://www.agapilabsolutions.com)

Contact Us:

Phone 1 (267) 397-3345

E-mail [customerservice@agapilabsolutions.com](mailto:customerservice@agapilabsolutions.com)

Thomas Scientific, LLC Family of Companies



agapi  
LAB SOLUTIONS

We Believe You Are Important  
— How Can We Help?

Spring/Summer 2018

# Equipment & Instrumentation Source Guide

Featuring Promotions and Product Solutions

